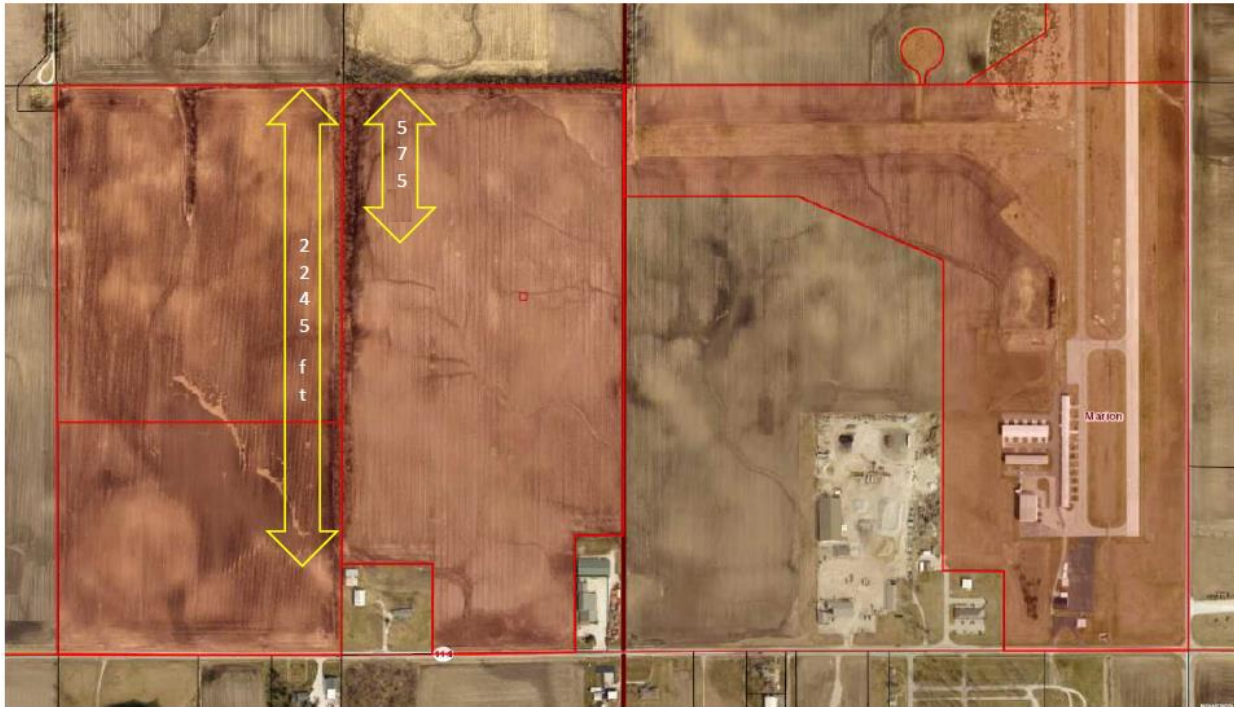


## Exhibit "B"



Area 1: ~ 575'

Area 2: ~ 2245' (includes Area 1)

- Proposal must include "Area 1" at a minimum.
- Proposal may also include alternate bid for "Area 2"
- Proposal must include tree removal to ground level
- Proposal must include tree/debris haul off and disposal offsite or onsite burning with all proper permissions/permits being the responsibility of the vendor
- Vendor responsible for leveling any major ruts caused by vendor's equipment prior to leaving grounds